



ELECTRON MACHINE CORPORATION

www.electronmachine.com

DCR E-Scan

HYBRID-DIGITAL REFRACTOMETER



SIMPLE. ACCURATE. RUGGED. RELIABLE.

- ▶ Stainless-steel CNC machined sensing head
- ▶ Sapphire Prism
- ▶ Simple display
- ▶ Nema 4X
- ▶ 4-20mA Isolated Output
- ▶ In-house manufactured in USA
- ▶ 24 Hour Service Support

The DCR E-Scan is a hybrid-digital critical angle refractometer. It is used to measure the refractive index of process fluids and may be used as an integral part of a complete process control system.

With an extremely durable Sapphire prism as the foundation, the hybrid-digital design provides digital accuracy with rugged components in the sensing head. This combination produces the essential dependability required for years of use when installed in harsh industrial environments.

The DCR E-Scan is the cost-effective refractometer for an accurate and dependable reading. Electron Machine Corporation calibrates each DCR E-Scan specifically for the intended application.

The digital display coupled with the 4-20mA output provides the complete control desired at an affordable cost without sacrificing the rugged reliability desired for today's industrial applications.

TYPICAL APPLICATIONS

FOOD:

Sucrose, Fructose, Dextrose, Soft Drinks, Fruit Juices, Dairy, Applesauce, Jams & Jellies, Beer, Wine, Spirits, Coffee, Tea, Vegetable Oils, Tomato Paste & Honey

CHEMICAL:

Sulphuric, Hydrochloric, Boric, & Phosphoric Acid, Sodium Hydroxide & Carbonate, Machine Coolant, Ethanol, Urea, Glycol, DMAC, PVOH, NaSCN, PVA, Hydrogen Peroxide & Oleum

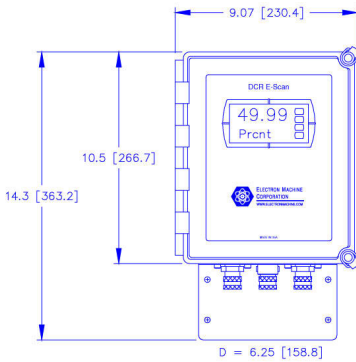
OPTIONS

Standard or Extended Probes

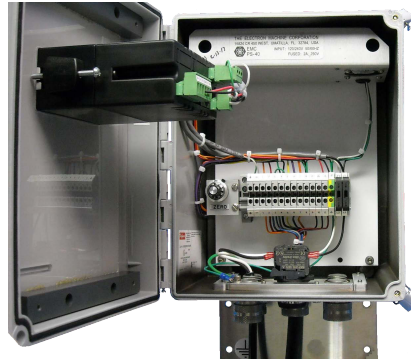
Various alloys for wetted parts, (Alloy-20, Hastelloy C, Tantalum & etc.)

Model DCR E-Scan

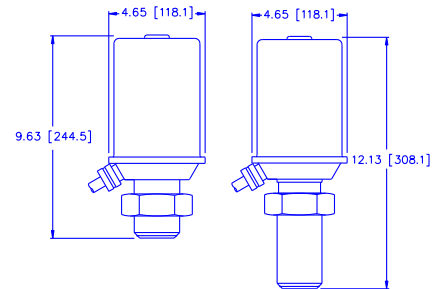
Accuracy/Repeatability	±0.05 BRIX (.000075 R.I.) or .5% of span
Response time	0.25 seconds to 3 minutes
Span	Configured for specific application for max. resolution
Display	Dual-Line 6-Digit, Sunlight Readable, -40° to 65°C Operating Temperature, NEMA 4X, IP 65
Process Temperature	Up to 150°C (300°F) without air purge
Sensing Head Wetted Materials	2205 Duplex S/S, Sapphire, Peek®, VITON®
Service/Support	24HR Technical hotline and fast response for repairs/parts
Standard Outputs	4-20mA Isolated
Interconnecting Cable	6M (20FT) standard 300M (1000FT) maximum



Easy Customer Connections



Standard Extended



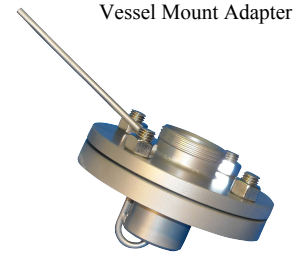
Optional Pipeline Adapters:



Sanitary Adapter



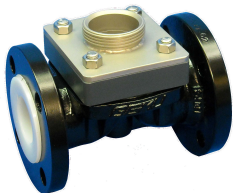
Spool Adapter



Vessel Mount Adapter



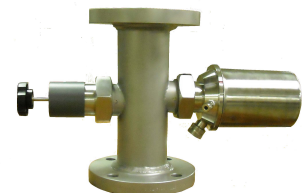
Weld-In Adapter



Lined Adapter



In-Line NPT Adapter



Spool Adapter with Hand Cleaner



ELECTRON MACHINE CORPORATION

15824 County Rd 450 W • Umatilla, FL 32784-2349 • 352-669-3101
www.electronmachine.com • sales@electronmachine.com